



UN-REDD 2026-2030 Programming scenarios

What does transformation look like
from a country standpoint?

UN-REDD
PROGRAMME






Food and Agriculture
Organization of the
United Nations






UN
DP

UN
environment
programme

Typology of Country Contexts for UN-REDD Support (2026–2030)

TYOLOGY	COUNTRY CHARACTERISTICS	TYPICAL STARTING POINT	STRATEGIC FOCUS
 Type A	<ul style="list-style-type: none">• Newer to REDD+ / fragmented capacity• Scarce FREL, MRV, and safeguards reporting• Limited access to international climate finance	<p>Fragmented, project-level efforts, unlinked data/safeguards</p> <p>Limited inclusion platforms/processes</p>	<p>Build systems and institutions for reporting, safeguard compliance, and transaction readiness</p>
 Transitional	<ul style="list-style-type: none">• Some REDD+ engagement• National systems partially in place• Unclear nesting/interoperability	<p>Parallel programs and systems with incomplete national integration</p> <p>Ad hoc inclusion platforms</p>	<p>Enable national articulation, nesting, and policy coherence to consolidate results and scale interventions.</p>
 Type B	<ul style="list-style-type: none">• Advanced implementation, multiple cycles• Strong institutions, strategies and registries• Links to NDCs, LTS, or Article 6 readiness	<p>Operational national systems with opportunities for optimization and scale</p>	<p>Deepen integration, align with Article 6 and climate finance flows, and optimize long-term effectiveness</p>

Style of Support by Country Typology (UN-REDD 2026–2030)

DIMENSION		 TYPE A	 TRANSITIONAL	 TYPE B
UN-REDD Role		Embedded technical partner for system-building and readiness	Connector between subnational/national; enable system alignment	Strategic advisor; scale-up, integration, and finance alignment
Type of Support	Finance	First ER transactions (GCF RBP), benefit-sharing mechanisms	Support for nesting design, verification, and results-based finance	Jurisdictional finance, Article 6 readiness, national investment planning
	Policy	REDD+ strategy, legal frameworks, safeguard clarification	Cross-sector policy coherence (land, agri, forest)	Optimization of policy instruments, permanence strategies
	Analysis	Forest cover mapping, baseline emissions data	Interoperability of systems, decentralization mapping	Effectiveness analysis, economic assessment, leakage/permanence risk assessments
Considerations	Scale	Subnational or national-level firsts	Multi-level (regional to national) nesting	Complexity of policy/political process
	Capacity	Basic institutional capacity for MRV/safeguards	Coordination mechanisms, legal and institutional maturity	Advanced cross-ministerial governance and finance strategy
	Risks	Unclear tenure, weak institutions	Misaligned or fragmented governance, low interoperability	Saturation of “low-hanging fruit” mitigation options, financial sustainability risks

Common Support Themes & Strategic Gradient

COMMON THEME

STRATEGIC GRADIENT

Social Inclusion

From ad-hoc stakeholder engagement → to broader lasting structures

Gender Equality

From specific safeguard plans → to fully responsive planning, finance, and benefit-sharing arrangements

Tenure Security

From time and resource limited efforts → to sustained momentum to advance in enforceable rights(esp. IP&LC)

Community-Based Governance

From project-level participation → to effective, long-term support to enhance forest governance support

Sustaining Transformations

From fragmented support → to consistent, multi-cycle institutional strengthening and legal anchoring

Countries w/UN-REDD TA

Engagement/progress
In carbon finance

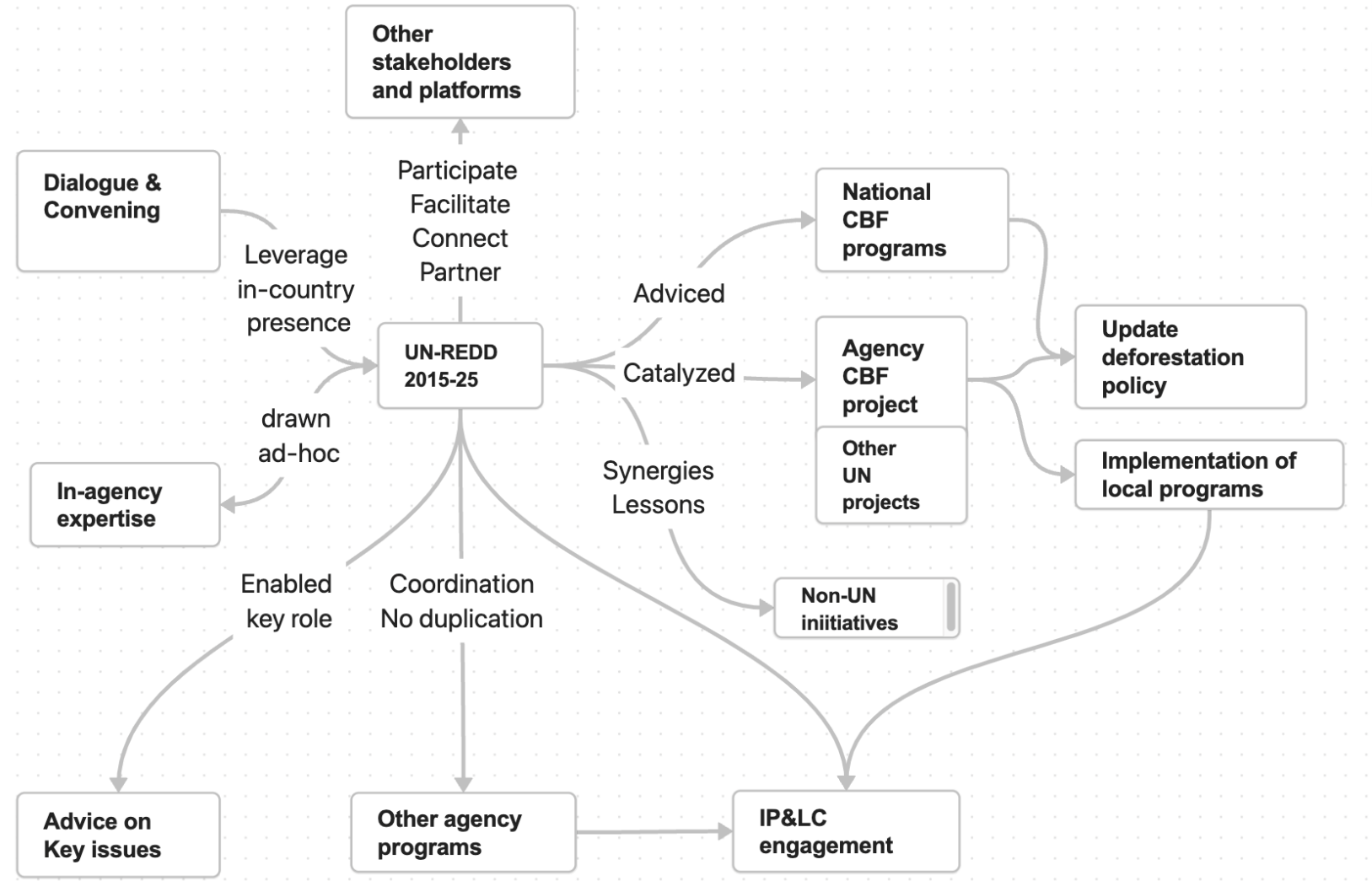
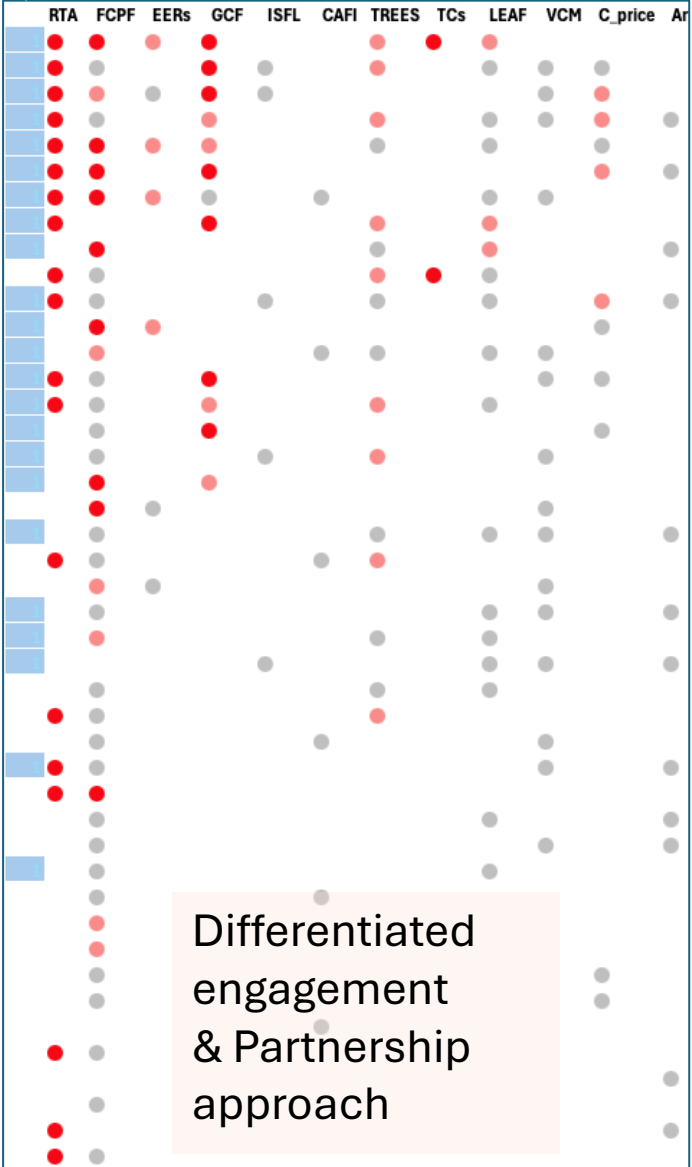


Illustration based on current Colombia support

THANK YOU!

UN-REDD
PROGRAMME



Food and Agriculture
Organization of the
United Nations



UN
environment
programme