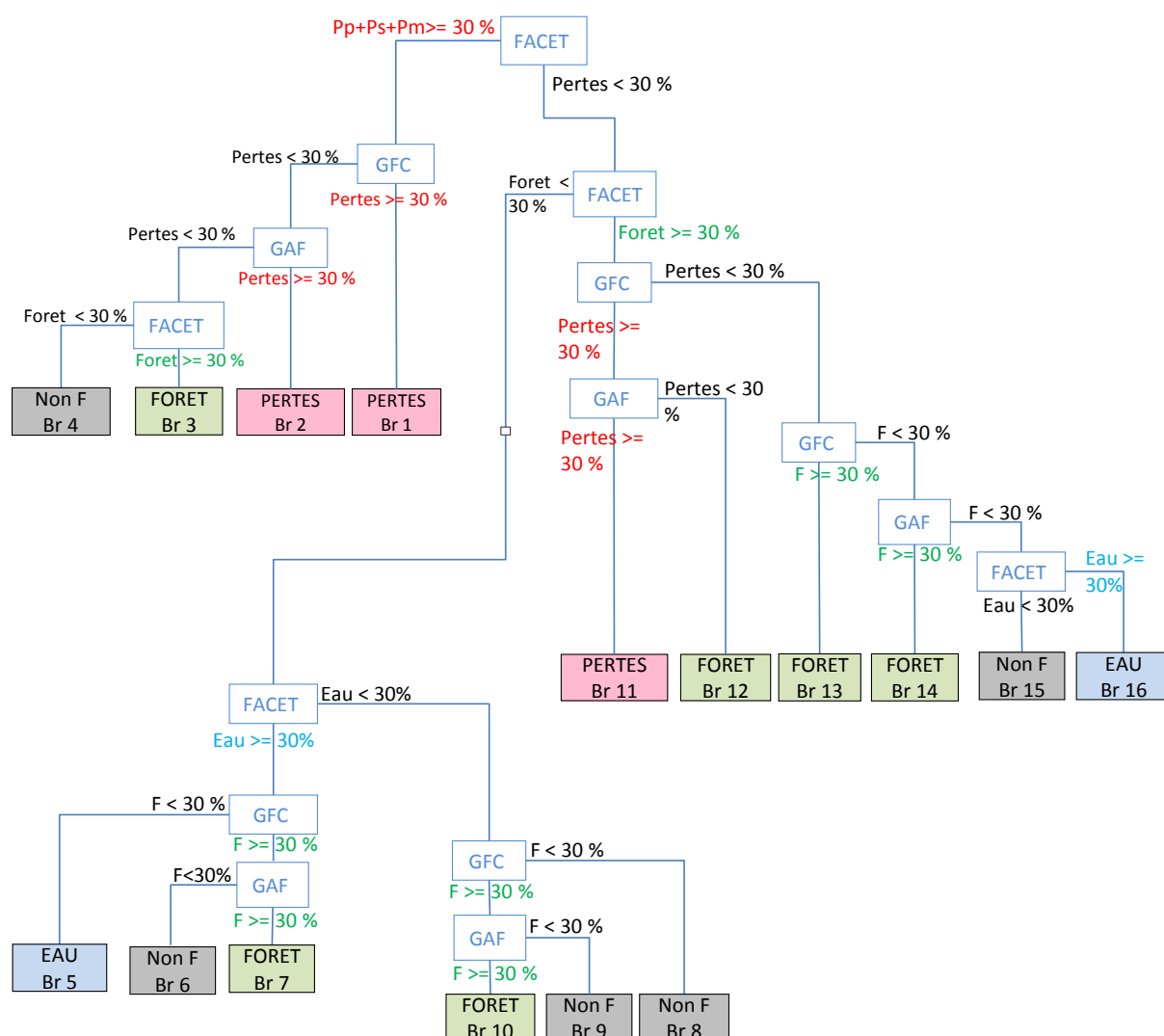
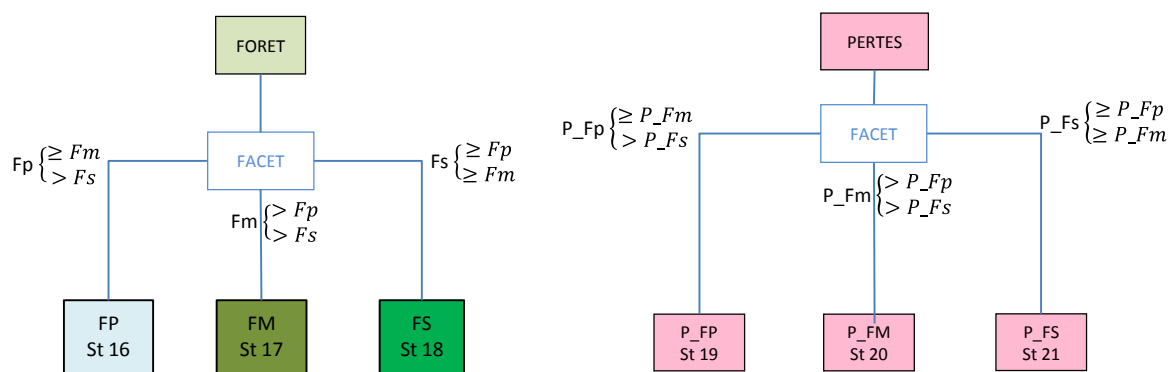


Annexe du rapport de production de la carte de changement de couvert forestier en République du Congo, période 2000-2012. Illustration de l'arbre de décision.

ARBRE DE DECISION



STRATIFICATION POUR LES FORETS ET LES PERTES DE FORET



Résumé de la fréquence d'apparition de chaque branche pour une boîte (Likouala)

branche	classe	polygone	prc
1	3	2696	0.17%
2	3	485	0.03%
3	1	1709	0.11%
4	2	445	0.03%
5	4	12302	0.76%
6	4	24	0.00%
7	1	11	0.00%
8	2	10029	0.62%
9	2	27718	1.72%
10	1	2575	0.16%
11	3	2764	0.17%
12	3	1993	0.12%
13	1	1547885	96.09%
14	1	100	0.01%
15	1	72	0.00%
16	4	109	0.01%
TOTAL		1610917	100.00%

classe 1 = Forêt, classe 2 = Non Forêt, classe 3 = Perte, classe 4 = Eau

Il faut lire le tableau comme suit : sur 1,610,917 polygones, la configuration correspondant à la branche 6 de l'arbre apparaît 24 fois.

Noter la très forte prédominance de la branche 13, correspondant aux zones où FACET et GFC indiquent une couverture forestière supérieure à 30%

La stratification répartit les forêts et les pertes de la façon suivante :

	Forêt	Perte	%F	%P
primaire	413988	3204	26.67%	40.36%
marécageuse	1122117	762	72.28%	9.60%
secondaire	16247	3972	1.05%	50.04%
total	1552352	7938		

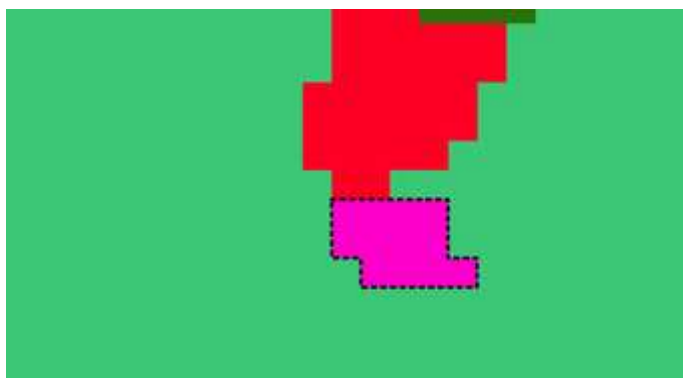
On peut par exemple interpréter ce tableau en disant que les forêts marécageuses sont prédominantes mais qu'elles subissent peu de pertes, alors que les forêts secondaires concentrent sur moins de 1% de la superficie des forêts la moitié des pertes enregistrées (les pertes ont lieu là où les forêts sont déjà dégradées)

Branche 1 -> pertes (0.17%)

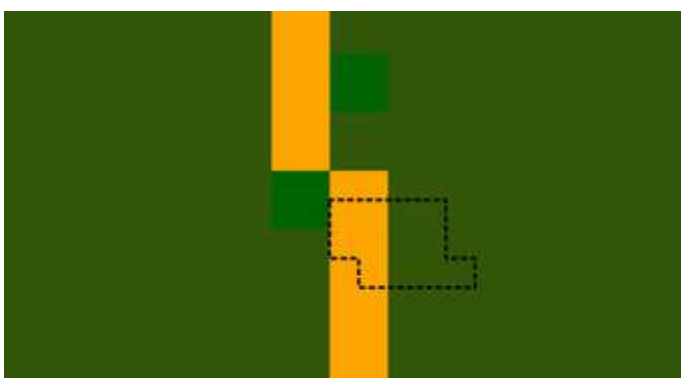
/ FACET PERTES >= 30%

/\ GFC PERTES >= 30%

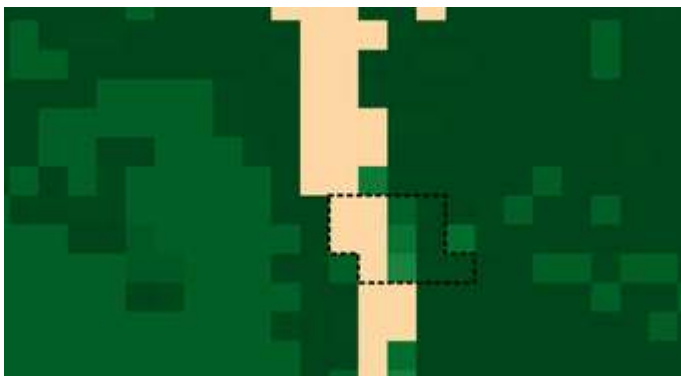
Résultat



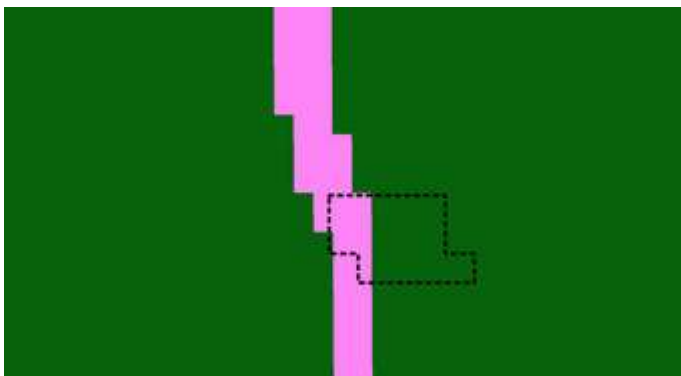
FACET



GFC



GAF



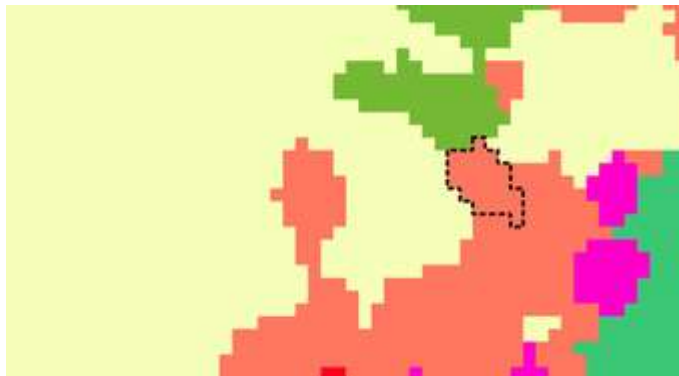
Branche 2 -> pertes (0.03%)

/ FACET PERTES >= 30%

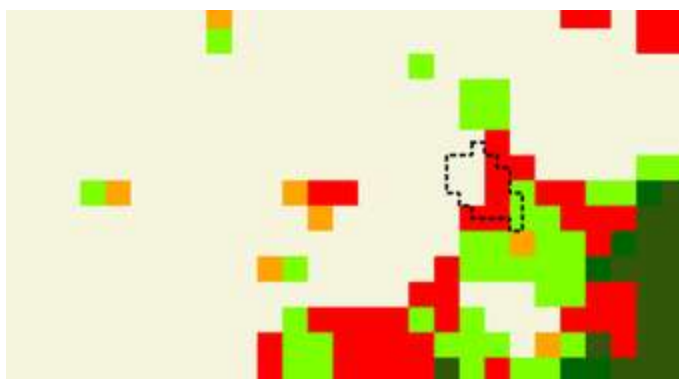
// GFC PERTES < 30%

/\ GAF PERTES >= 30%

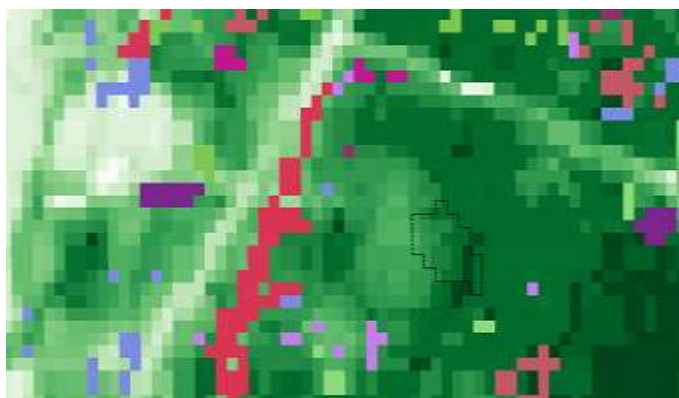
RESULTAT



FACET



GFC



GAF



Branche 3 -> foret (0.11%)

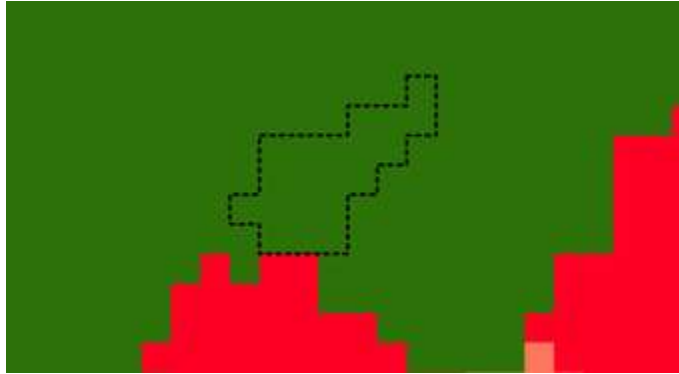
/ FACET PERTES >= 30%

// GFC PERTES < 30%

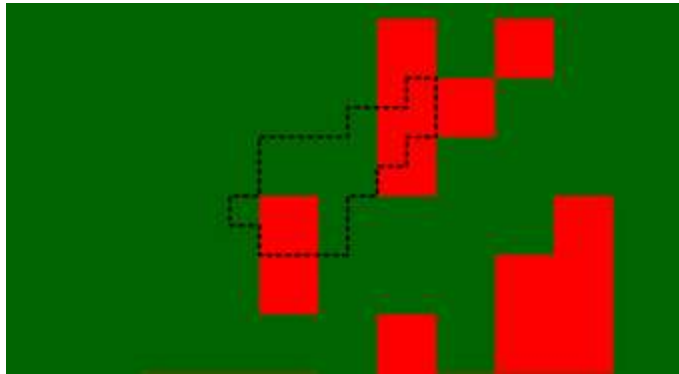
/// GAF PERTES < 30%

///\ FACET FORET >= 30%

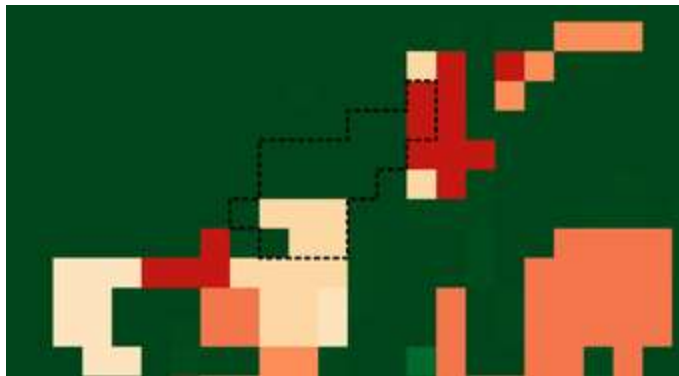
RESULTAT



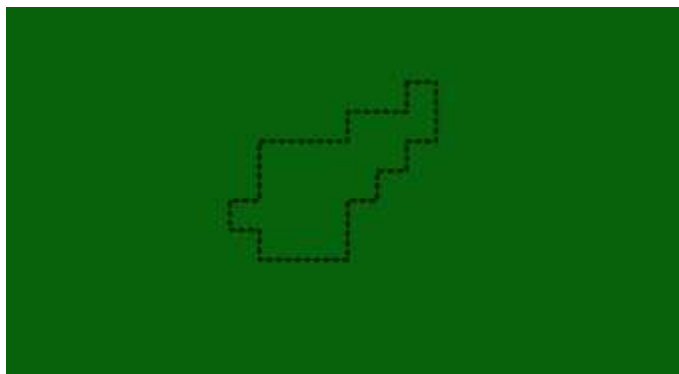
FACET



GFC



GAF



Branche 4 -> non-foret (0.03%)

/ FACET PERTES >= 30%

// GFC PERTES < 30%

/// GAF PERTES < 30%

//// FACET FORET < 30%

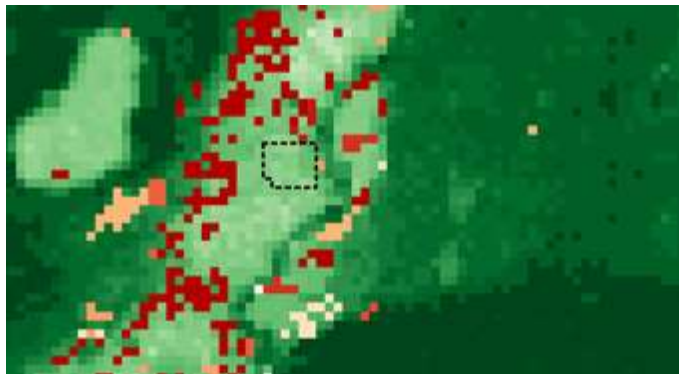
RESULTAT



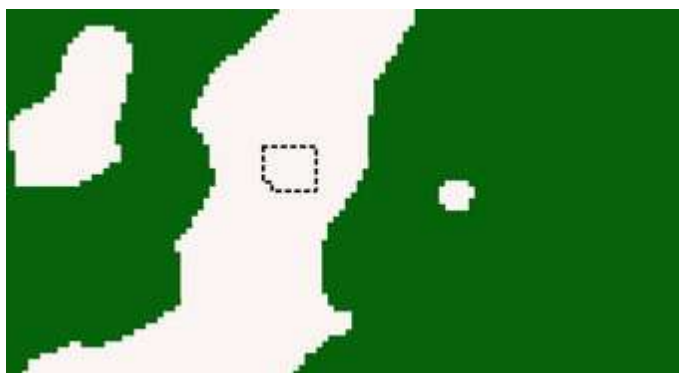
FACET



GFC



GAF



Branche 5 -> eau

(0.76%)

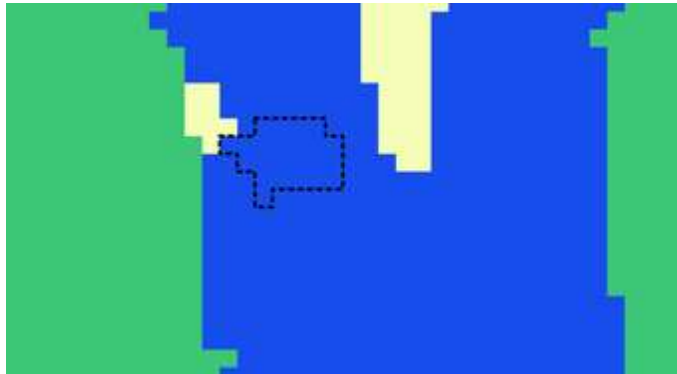
\ FACET PERTES < 30%

\ FACET FORET < 30%

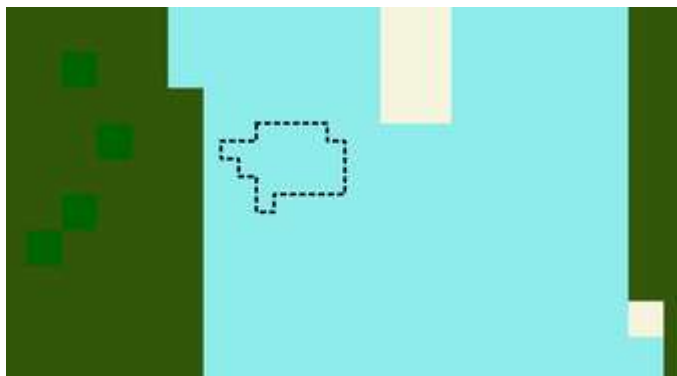
\ / FACETEAU >= 50%

\ / / GFC FORET < 60%

RESULTATS



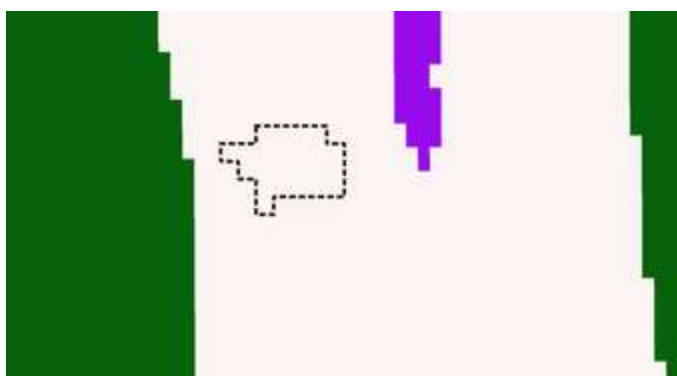
FACET



GFC



GAF



Branche 6 -> eau

(<0.01%)

\ FACET PERTES < 30%

\ FACET FORET < 30%

\ / FACET EAU >= 50%

\ / GFC FORET >= 60%

\ / GAF FORET < 30%

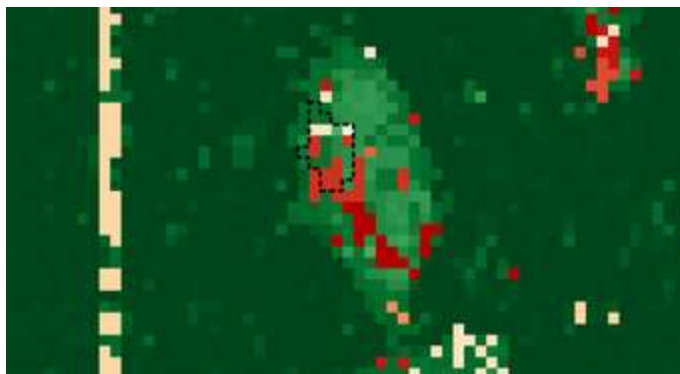
RESULTAT



FACET



GFC



GAF



Branche 7 -> foret (<0.01%)

\ FACET PERTES < 30%

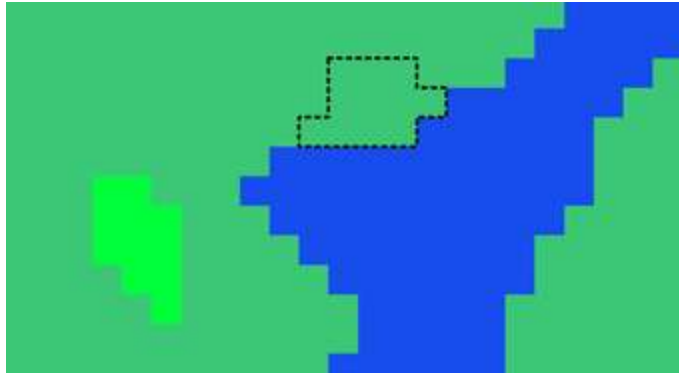
\ FACET FORET < 30%

\ / FACET EAU >= 50%

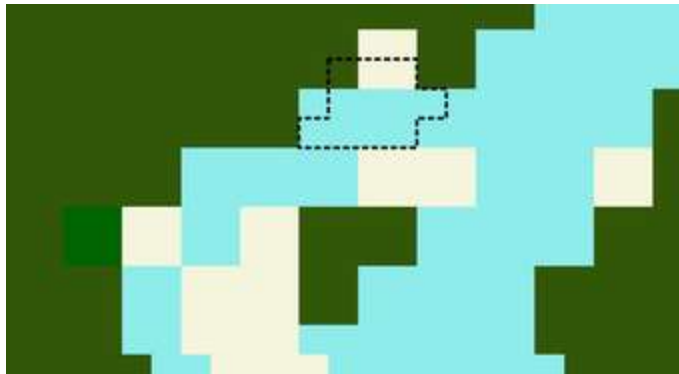
\ / GFC FORET >= 60%

\ / \ GAF FORET >= 30%

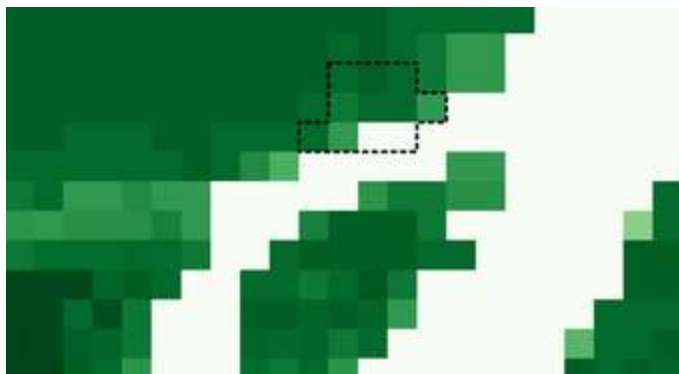
RESULTAT



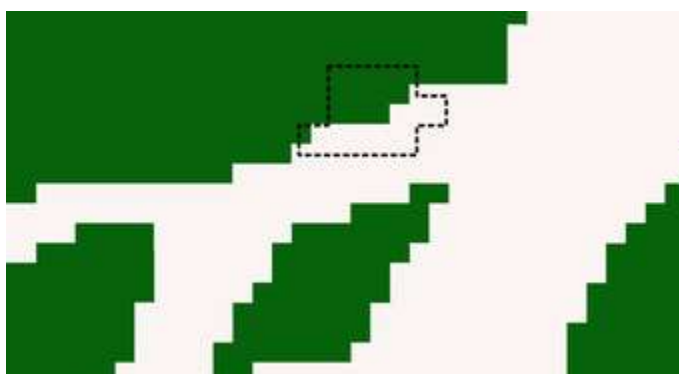
FACET



GFC



GAF



Branche 8 -> non-foret (0.62%)

\ FACET PERTES < 30%

\ FACET FORET < 30%

\ FACETEAU < 50%

\ GFC FORET < 30%

RESULTAT



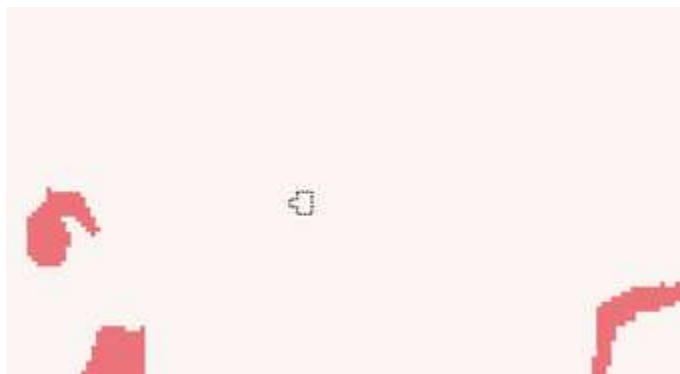
FACET



GFC



GAF



Branche 9 -> non-foret

(1.72%)

\ FACET PERTES < 30%

\ FACET FORET < 30%

\ FACETEAU < 50%

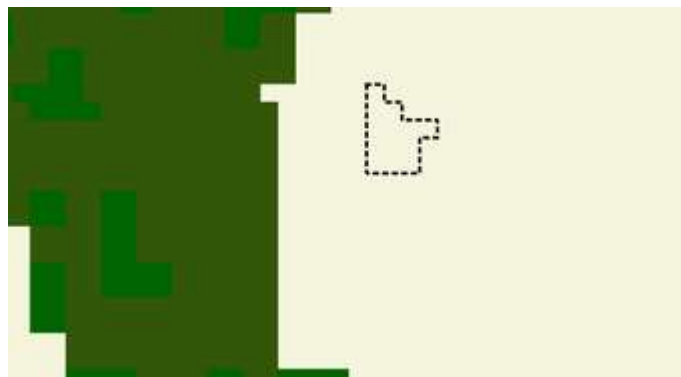
\ GFC FORET >= 30%

\ GAF FORET < 30%

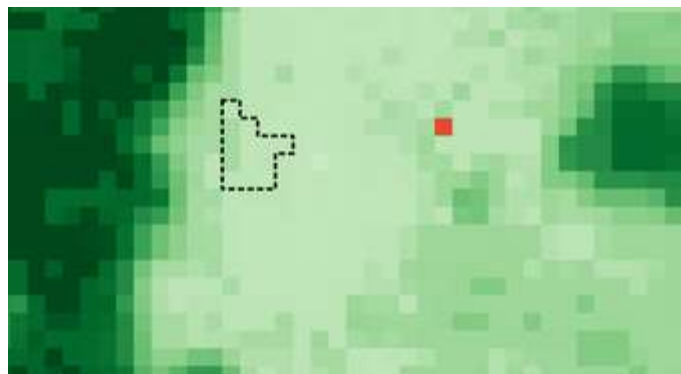
RESULTAT



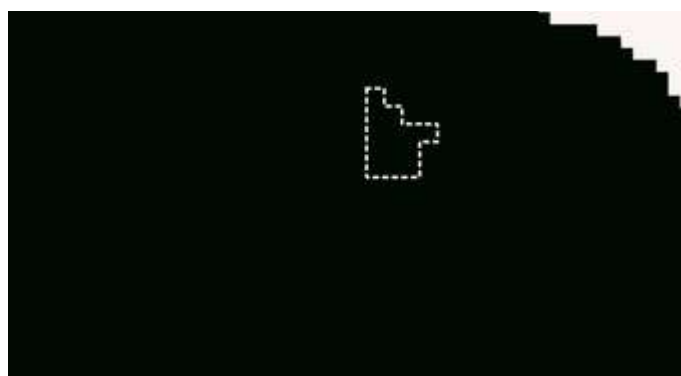
FACET



GFC



GAF



Branche 10 -> foret

(0.16%)

\ FACET PERTES < 30%

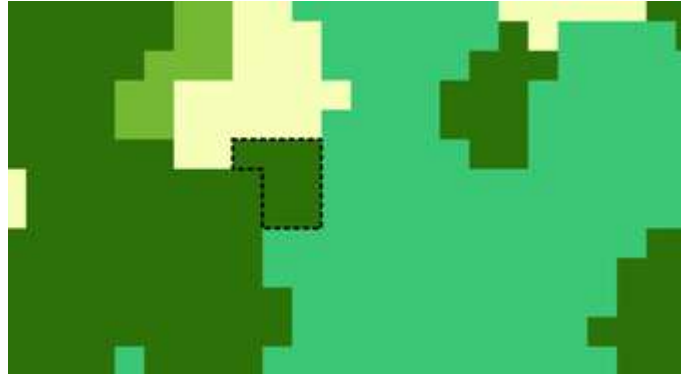
\ FACET FORET < 30%

\ FACETEAU < 50%

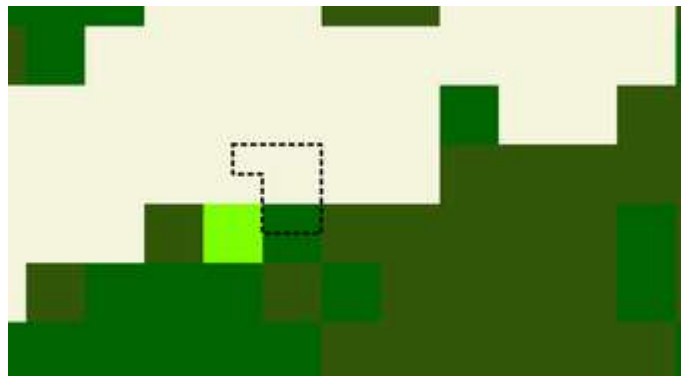
\ GFC FORET >= 30%

\ GAF FORET >= 30%

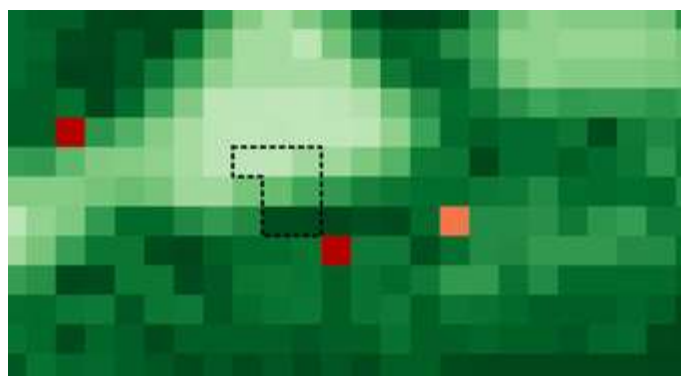
RESULTATS



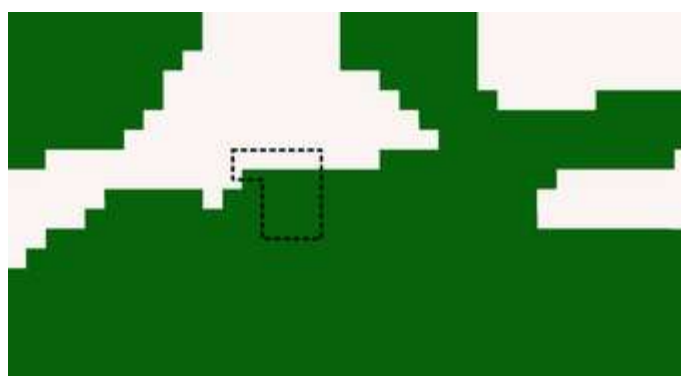
FACET



GFC



GAF



Branche 11 -> pertes

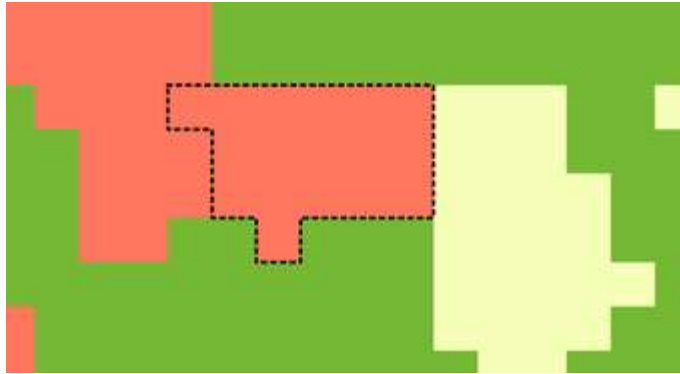
(0.17%)

\ FACET PERTES < 30%

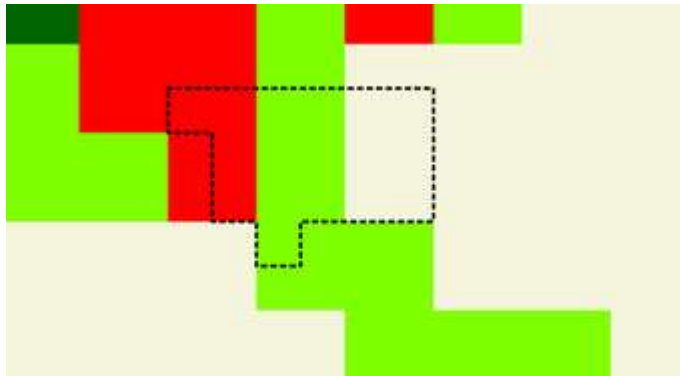
\\ FACET FORET >= 30%

\\/ GFC PERTES >= 30%

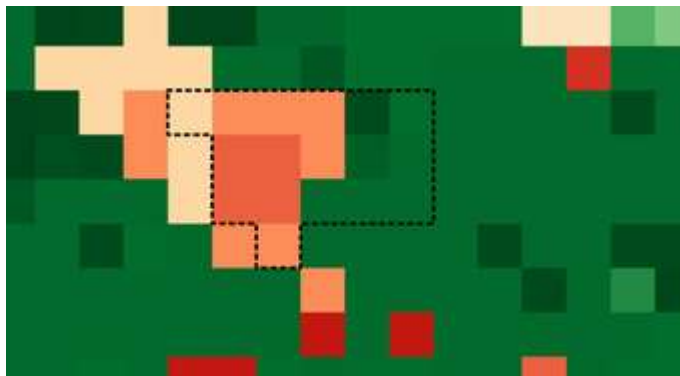
RESULTAT



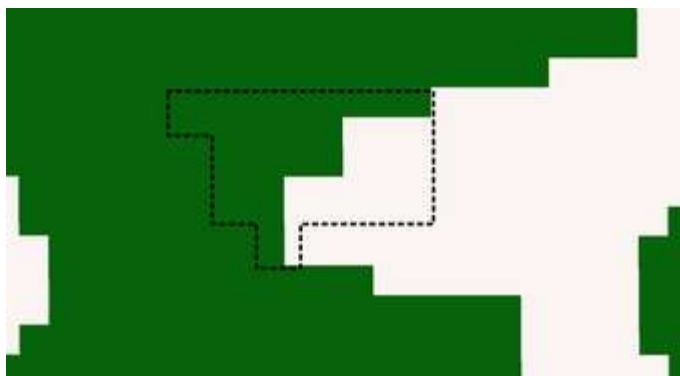
FACET



GFC



GAF



Branche 12 -> pertes (0.12%)

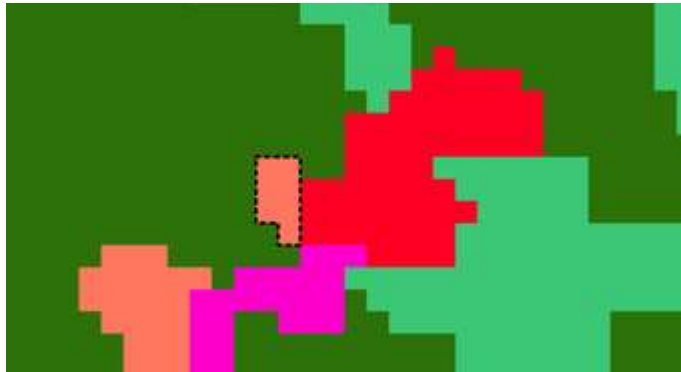
\ FACET PERTES < 30%

\\ FACET FORET >= 30%

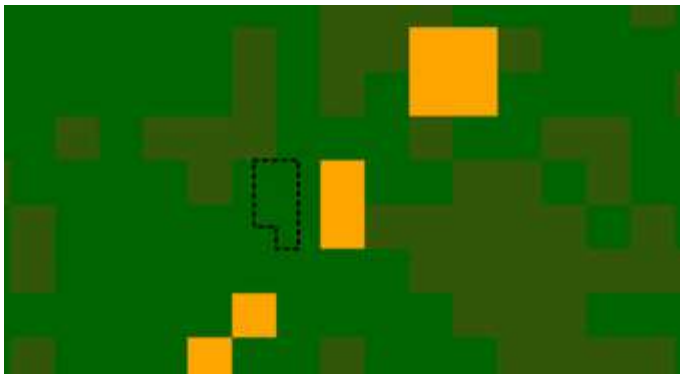
\\ \\ GFC PERTES < 30%

\\ \\ \\ GAF PERTES >= 30%

RESULTAT



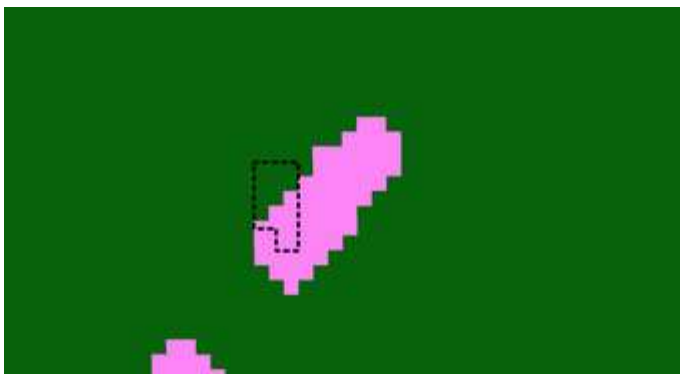
FACeT



GFC



GAF



Branche 13 -> foret (96.09%)

\ FACET PERTES < 30%

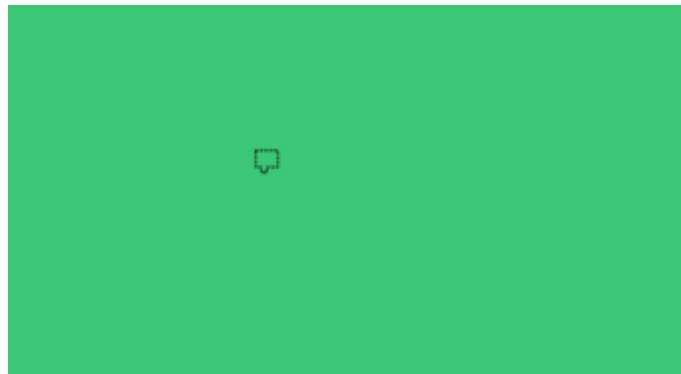
\\ FACET FORET >= 30%

\\ GFC PERTES < 30%

\\ GAF PERTES < 30%

\\ GFC FORET >= 30%

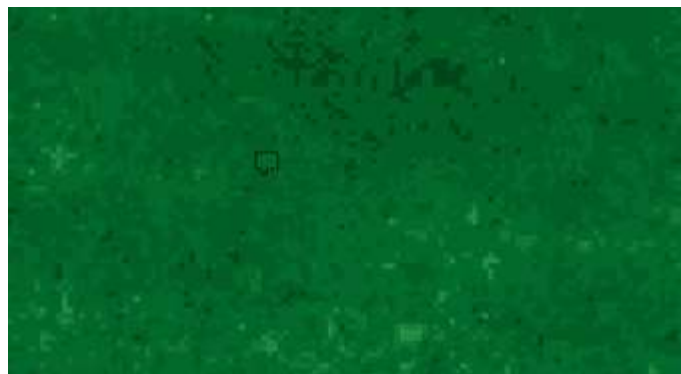
RESULTAT



FACET



GFC



GAF



Branche 14 -> foret

(0.01%)

\ FACET PERTES < 30%

\\ FACET FORET >= 30%

\\ \\ GFC PERTES < 30%

\\ \\ \\ GAF PERTES < 30%

\\ \\ \\ \\ GFC FORET < 30%

\\ \\ \\ \\ / GAF FORET >= 30%

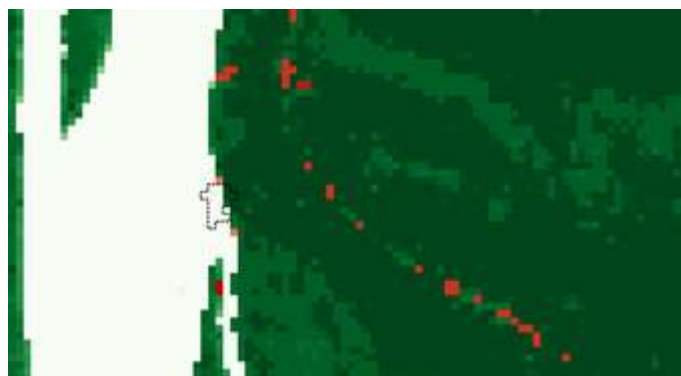
RESULTAT



FACET



GFC



GAF



Branche 15 -> Foret

(<0.01%)

\ FACET PERTES < 30%
\\ FACET FORET >= 30%
\\\ GFC PERTES < 30%
\\\\ GAF PERTES < 30%
\\\ GFC FORET < 30%
\\\ GAF FORET < 30%
\\\ / FACET EAU < 50%

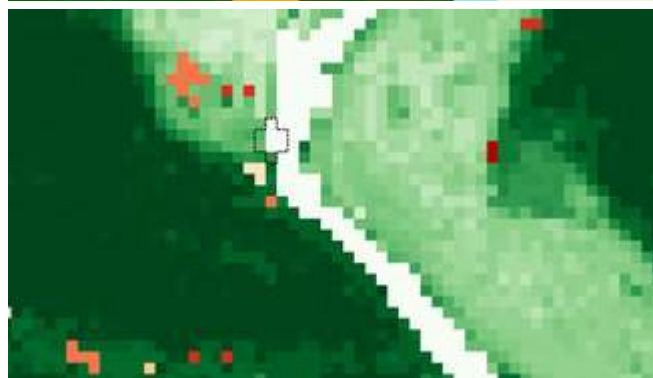
RESULTAT



FACET



GFC



GAF



Branche 16 -> Eau (0.01%)

\ FACET PERTES < 30%
\\ FACET FORET >= 30%
\\\ GFC PERTES < 30%
\\\\ GAF PERTES < 30%
\\\\ GFC FORET < 30%
\\\ GAF FORET < 30%
\\\ FACET EAU >= 50%

RESULTAT



FACET



GFC



GAF



