



PERÚ

Ministerio  
del Ambiente



# BOSQUES

en tus manos

Programa Nacional de Conservación de Bosques  
para la Mitigación del Cambio Climático





# EXPRESSION OF INTEREST UN-REDD NATIONAL PROGRAM - PERU -



# INDEX OF THE PRESENTATION



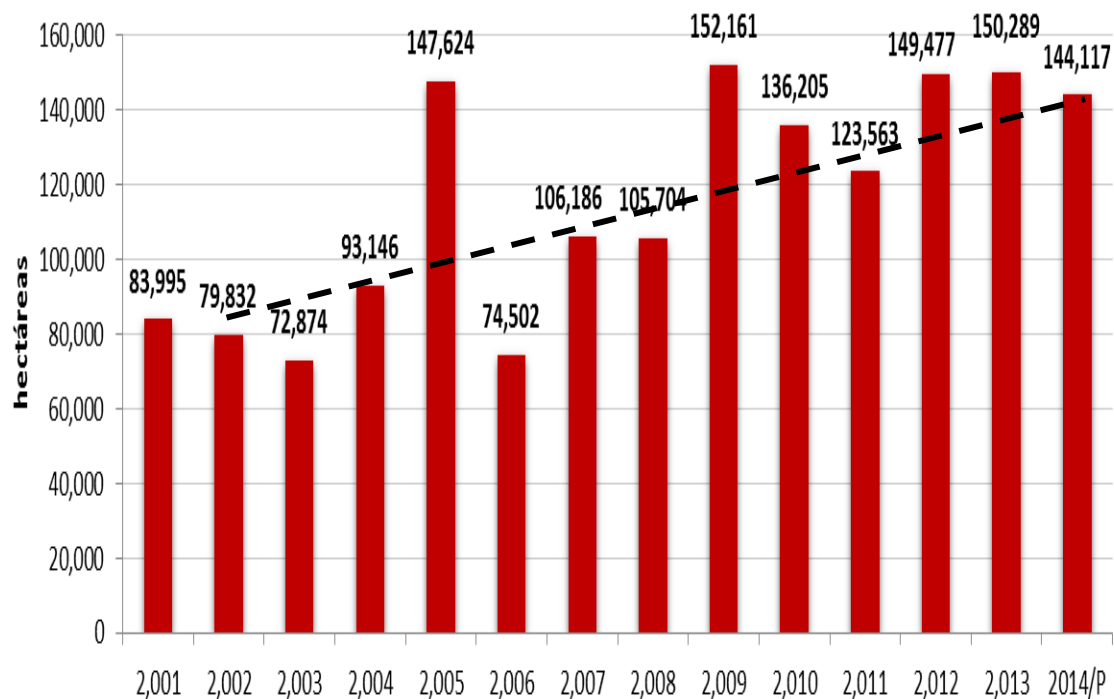
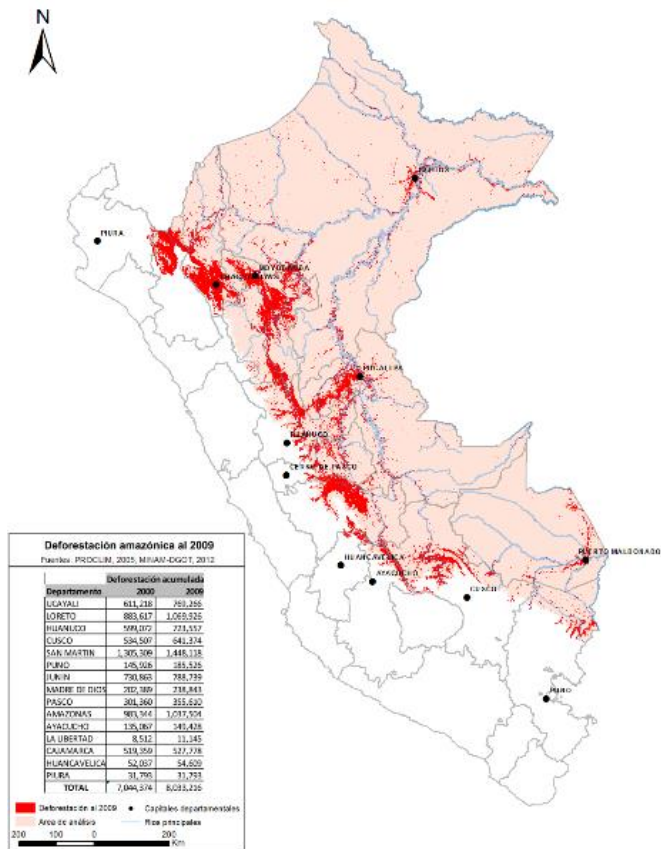
- STATE OF FORESTS
- STATE OF REDD+
- THE PROPOSAL FOR A UN-REDD NATIONAL PROGRAM IN PERU
- EXISTING SUPPORT TO PERU'S REDD + EFFORTS
- GAP ANALYSIS
- ESTIMATED BUDGET
- ADDED VALUE OF THE UN-REDD SUPPORT



# STATE OF FORESTS IN PERU



- FORESTS COVERS 60% OF THE COUNTRY (HF – LD)
- 94% OF THEM ARE AMAZON RAINFOREST
- DURING LAST 13 YEARS, DEFORESTATION IS GROWING STEADILY

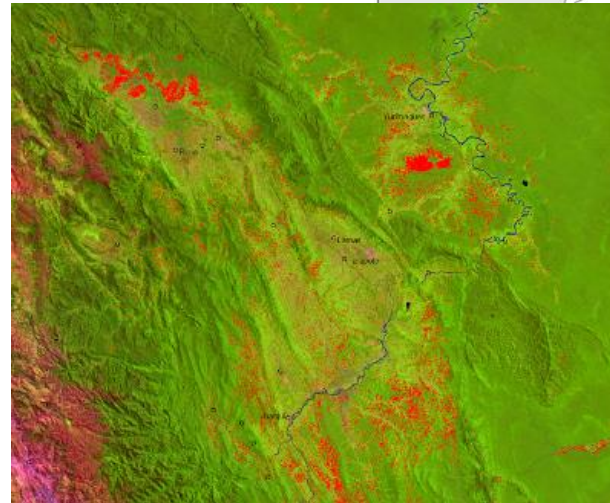
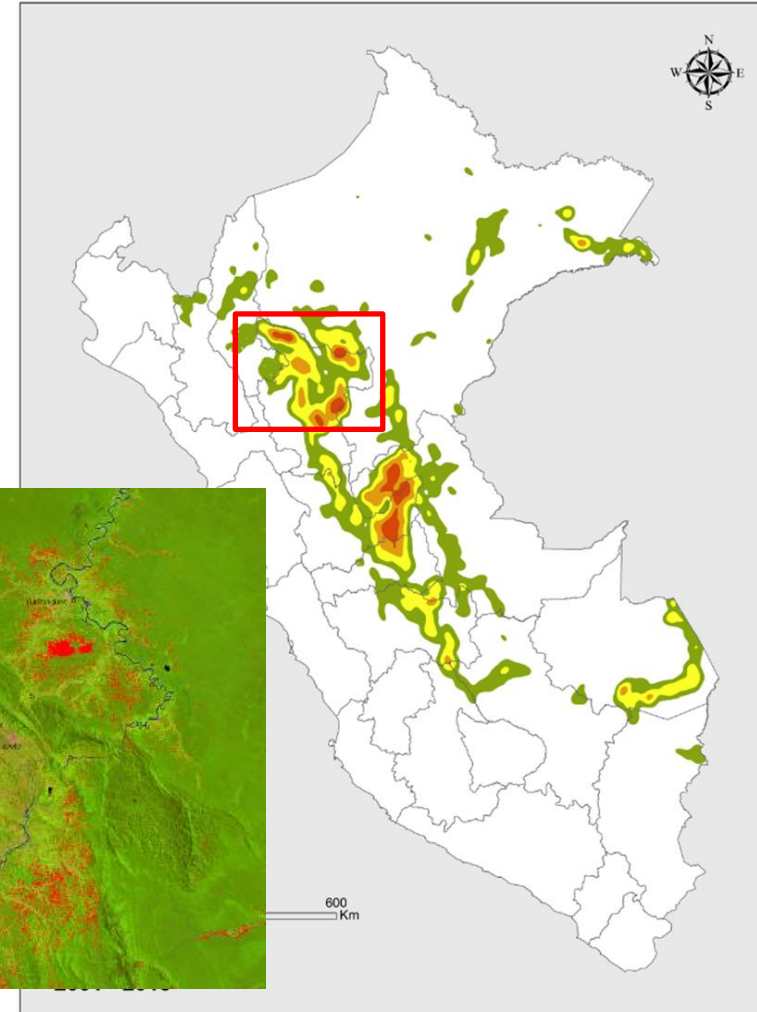


# STATE OF FORESTS IN PERU



MAIN DRIVERS OF DEFORESTATION ARE LINKED TO AGRARIAN ACTIVITIES (COFFEE, COCOA, PASTURES, PALM OIL)

- 46 % OF TOTAL DEFORESTATION IN 27% AMAZON WITHOUT RIGHTS.
- >80% ON SOILS NOT SUITABLE FOR AGRICULTURE
- 75 – 90% LESS THAN 1 HA/YEAR. SMALL PRODUCERS



# STATE OF REDD+ IN PERU



## ■ LEGAL-INSTITUTIONAL:

- FORESTRY AND WILDLIFE POLICY, LAW & REGULATIONS
- ENVIRONMENTAL SERVICES RETRIBUTION MECHANISMS LAW
- NATIONAL REGISTRY AND NESTING

## ■ NFMS & FREL:

- AMAZON DEFORESTATION 2000-2013
- CARBON STOCKS IN 6 ECO-ZONES
- FREL (IN PROGRESS)

## ■ REDD+ IMPLEMENTATION:

- NATIONAL STRATEGY OF FORESTS AND CLIMATE CHANGE AND AP FOR REDD+
- FINANCIAL MECHANISM FOR RBP & BENEFIT SHARING SCHEME
- PRIVATE SECTOR ENGAGEMENT
- TDC

## ■ SAFEGUARDS

- ROADMAP, LEGAL ANALYSIS, CAPACITY BUILDING. INSTITUTIONAL ARRANGEMENT (IN PROGRESS), SIS (IN PROGRESS)

# REDD+ APPROACH



TO DEAL WITH LOSS OF FOREST, PERU IS WORKING ON A LANDSCAPE APPROACH, THAT IMPLIES IMPLEMENT STRATEGIC ACTIONS IN THE WHOLE RURAL LANDSCAPE, BOTH IN THE FORESTS AND IN THEIR MARGINS.

INTERVENTIONS IN MULTIPLE LEVELS, INCLUDING GOVERNANCE AND PRODUCTIVE ACTIONS, AMONG OTHERS AND WITH THE PARTICIPATION OF ALL THE STAKEHOLDERS (PUBLIC AND PRIVATE) PLAYING AT DIFFERENT LEVELS (NATIONAL, REGIONAL AND LOCAL LEVELS)



# EXISTING SUPPORT TO PERU'S REDD + EFFORTS



- JOINT DECLARATION OF INTENT, SIGNED WITH NORWAY AND GERMANY, IS THE FIRST RESULTS BASED PAYMENT AGREEMENT, UP TO 300 USD MILLIONS (250 OF THEM LINKED WITH VERIFIED REDUCED EMISSIONS)
- FOREST INVESTMENT PROGRAM, TO IMPLEMENT ACTIVITIES TO ADDRESS DEFORESTATION IN 3 AMAZON REGIONS
- FCPF R-PP & CARBON FUND, HAS SELECTED PERU TO PREPARE AN R-PIN TO APPLY TO A POTENTIAL ERPA FOR 2 JURISDICTIONAL PROGRAMS
- KfW, IS PROVIDING TECHNICAL COOPERATION FOR THE REDD+ READINESS PREPARATION
- JICA, WILL PROVIDE TECHNICAL ASSISTANCE FOR TESTING SOME PILOT REDD+ ACTIVITIES IMPLEMENTATION WITH NATIVE COMMUNITIES
- UN-REDD, IS PROVIDING TARGETED SUPPORT THROUGH UNEP, UNDP, FAO FOR DIFFERENT KEY ISSUES SUCH AS FINANCIAL MECHANISM, SAFEGUARDS, PRIVATE SECTOR ENGAGEMENT, AND CAPACITY BUILDING (IIPP)



# GAP ANALYSIS



PROPOSED ACTIVITIES	LINKAGE WITH OTHER PROJECTS	IDENTIFIED GAPS COVERED BY UN-REDD
<p>PORTFOLIO DESIGN FOR STRATEGIC ACTIONS PRIORITIZED IN ENBCC</p>	<p>WITH SUPPORT OF KFW AND FCPF, A PARTICIPATIVE PROCESS TO DESIGN ENBCC WILL BE IMPLEMENTED AND WITH UNDP SUPPORT, THE FINANCIAL MECHANISM IS UNDER CONSTRUCTION</p>	<p>THE OUTCOMES OF THE ENBCC (PRIORITIZED STRATEGIC ACTIONS) WON'T HAVE THE REQUIRED LEVEL OF DETAIL TO BE A BANKABLE PROJECTS PORTFOLIO FOR THE FUND</p>
<p>ENHANCEMENT OF CAPACITIES FOR SM OF COMMUNAL FORESTS</p>	<p>WITH PUBLIC RESOURCES AND GIZ SUPPORT, PNCB IS IMPLEMENTING BUSINESS PLANS IN INDIGENOUS COMMUNITIES IN THE FRAMEWORK OF TDC</p>	<p>SINCE THE BEGINNING OF TDC, THE TECHNICAL ASSISTANCE HAS BEEN PROVIDED BY PNCB. A SECOND STAGE REQUIRES THAT THIS TASK TO BE TRANSFERRED PROGRESSIVELY TO REGIONAL GOVERNMENTS AND IICC</p>
<p>DESIGN &amp; PILOT IMPLEMENTATION OF INDIGENOUS MRV</p>	<p>MRV NATIONAL SYSTEM HAS MADE SIGNIFICANT IMPROVEMENTS TO MONITOR DEFORESTATION IN THE AMAZON, WITH THE SUPPORT OF FGBM AND KFW</p>	<p>EVEN THOUGH THESE IMPROVEMENTS, THE MRV SYSTEM IS MAINLY FOCUSED ON REMOTE SENSING TOOLS BUT DO NOT INCORPORATE THE INDIGENOUS APPROACH IN THE FIELD. THE PROGRAM WILL TRAIN ON THIS ISSUE</p>

# GAP ANALYSIS



PROPOSED ACTIVITIES	LINKAGE WITH OTHER PROJECTS	IDENTIFIED GAPS COVERED BY UN-REDD
ESTIMATION OF ACTIVITY DATA FOR DEGRADATION IN THE AMAZON AND POLICIES DEVELOPMENT	WITH KFW SUPPORT, PNCB HAS STARTED TO APPLY AN INDIRECT METHOD AND TEST THE DIRECT ONE TO MONITOR DEGRADATION. DURING 2016, THE IMPROVEMENT OF BOTH METHODS WILL BE DONE (PILOT TEST IN SAN MARTIN AND UCAYALI)	BASED ON THE RESULTS OF THIS ACTIVITY, MRV SYSTEM WILL INCORPORATE THE SECOND MOST IMPORTANT REDD SOURCE OF EMISSIONS.
PROPOSAL OF A MULTILEVEL NESTING SCHEME	WITH KFW SUPPORT, PNCB IS DESIGNING THE REDD NATIONAL REGISTRY WITH ITS LEGAL FRAMEWORK. A MOU HAS BEEN SIGNED WITH VCS TO TEST A NESTING SCHEME IN 2015	THE REQUESTED SUPPORT WILL HELP TO PROMOTE A DEBATE ABOUT NESTING FAR AWAY FROM VCS SCENARIOS

# GAP ANALYSIS



- ENBCC
- **Projects Portfolio**
- FNBCC
- Private Sector Engagement
- TDC (**technical assistance**)

- Forestry & Wildlife Law
- PES Law
- REDD Registry & **Nesting Scheme**

- MRV (**+ indigenous approach**)
- Activity Data (deforestation & **degradation**)
- FREL

- Roadmap
- Legal Analysis
- Institutional Arrangements
- Capacity Training

# EXPRESSION OF INTEREST



PROPOSED ACTIVITIES	LINKAGE WITH R-PP	DESCRIPTION
PORTFOLIO DESIGN FOR STRATEGIC ACTIONS PRIORITIZED IN ENBCC	2B. OPTIONS OF REDD STRATEGY	IT WILL ALLOW TO IDENTIFY AND CHARACTERIZE THE BEST OPTIONS TO IMPLEMENT THE STRATEGIC ACTIONS IDENTIFIED IN THE ENBCC
ENHANCEMENT OF CAPACITIES FOR SUSTAINABLE MANAGEMENT OF COMMUNAL FORESTS	1A. ARRANGEMENTS FOR NATIONAL REDD MANAGEMENT	IT WILL HELP TO ENHANCE THE CAPACITIES IN IIPP AND REGIONAL GOVERNMENTS TO PROMOTE A SUSTAINABLE COMMUNITY FOREST MANAGEMENT, ONE OF THE STRATEGIC ACTIONS OF THE ENBCC
DESIGN & PILOT IMPLEMENTATION OF INDIGENOUS MRV	4A. DEVELOPMENT OF A NATIONAL FORESTRY MONITORING SYSTEM	IT WILL INCREASE THE DEGREE OF ADOPTION AND LEGITIMACY OF MRV SYSTEM AND WILL ALLOW TO MEET ONE OF THE DELIVERABLES OF THE DCI
ESTIMATION OF ACTIVITY DATA FOR DEGRADATION IN THE AMAZON	3. DEVELOPMENT OF A NATIONAL FOREST REFERENCE EMISSIONS LEVEL	IT WILL ALLOW TO IMPROVE THE ACCOMPLISHMENT OF THE ROADMAP FOR THE BUILDING OF A NATIONAL FREL
PROPOSAL OF A MULTILEVEL NESTING SCHEME	2C. IMPLEMENTATION FRAMEWORK FOR REDD+	IT WILL ALLOW TO ESTABLISH CLEAR RULES FOR THE NESTING OF PROJECT AND SUB-NATIONAL LEVEL IN THE NATIONAL ARCHITECTURE, GUARANTEEING THE NATIONAL ACCOUNTING

# COMPLEMENTARITY WITH OTHER PROGRAMS



PROPOSED ACTIVITIES	TS UN-REDD	DoI NORWAY / FCPF / FIP / KfW
PORTFOLIO DESIGN FOR STRATEGIC ACTIONS PRIORITIZED IN ENBCC	NATIONAL FUND FOR FOREST & CLIMATE CHANGE (ACTIVITY 3) INSTITUTIONAL ARRANGEMENTS FOR SAFEGUARDS DESIGN (ACTIVITY 4)	ENBCC (FCPF, DCI) <b>FINANCIAL MECHANISM (DoI)</b>
ENHANCEMENT OF CAPACITIES FOR SUSTAINABLE MANAGEMENT OF COMMUNAL FORESTS	CAPACITY STRENGTHENING STRATEGY (ACTIVITY 2) REDD COMMUNICATION STRATEGY (ACTIVITY 1)	<b>2 MILLIONS OF HA UNDER CONSERVATION AGREEMENTS (DoI)</b> ENHANCEMENT OF CAPACITIES FOR MRV IN THE NATIONAL AND SUB-NATIONAL LEVEL (FCPF)
DESIGN & PILOT IMPLEMENTATION OF INDIGENOUS MRV		<b>INDIGENOUS APPROACH MRV (KfW, DoI)</b>
ESTIMATION OF ACTIVITY DATA FOR DEGRADATION IN THE AMAZON & POLICIES DEVELOPMENT		DEGRADATION (KfW) <b>NATIONAL FREL ROADMAP (DoI)</b>
PROPOSAL OF A MULTILEVEL NESTING SCHEME		BENEFIT SHARING SCHEME (KfW, FCPF-CF)

# COMPLEMENTARITY WITH OTHER PROGRAMS



Entidad Aportante ?	PPTO GLOBAL POR CICLO DE PROYECTO / PROGRAMA / CONVENIO (EN MILLONES DE US\$)																	
	Banco Mundial		BID		KFW		JICA		CAF	Noruega	GIZ	UN-REDD	Perú	TOTAL			TOTAL	
Modalidad de aporte ?	Donación	Deuda	Donación	Deuda	Donación	Deuda	Donación	Deuda	Deuda	Donación	Donación	Donación	Contrapartida	Donación	Deuda	Contrapartida		
Nombre de Proyecto ?																		
FIP <sup>145</sup>	6.60	6.40	21.70	16.80										28.30	23.20		51.50	
Proyecto REDD-MINAM					7.56								0.09	7.56	-	0.09	7.66	
R-PP FCPF			3.80											3.80	-		3.80	
PCB-JICA <sup>14</sup>							1.00	20.00						1.00	20.00		21.00	
Desarrollo Forestal Inklusivo y Competitivo <sup>3</sup>									29.46					-	29.46		29.46	
Gestión Forestal Sostenible <sup>34</sup>					7.73	41.50								7.73	41.50		49.23	
TDC														-	-		-	
Conservación y Aprovechamiento ANP <sup>3</sup>														-	-		-	
CBCII/GIZ											6.90		1.38	-	-	1.38	1.38	
PAT/USAID <sup>3</sup>														-	-		-	
UNREDD/PNUMA												0.19		0.19	-		0.19	
UNREDD/FAO												0.14		0.14	-		0.14	
UNREDD/PNUD												0.50		0.50	-		0.50	
CI Noruega/Alemania <sup>2</sup>										300.00				300.00	-		300.00	
ER- PD (ERPA) FCPF <sup>24</sup>	50.65													50.65	-		50.65	
														<b>TOTAL</b>	<b>399.87</b>	<b>114.16</b>	<b>1.48</b>	<b>515.51</b>
														<b>CONFIRMADO</b>	<b>12.19</b>	<b>29.46</b>	<b>1.48</b>	<b>43.13</b>

<sup>1</sup> Pendiente de completar los procesos de endeudamiento bajo el Sistema Nacional de Inversión Pública

<sup>2</sup> Se desembolsará contra cumplimiento de metas establecidas en el acuerdo

<sup>3</sup> No es ejecutado por el PNCB

<sup>4</sup> No confirmado

<sup>5</sup> De concretarse, recién iniciaría el 2017

# ESTIMATED BUDGET



ACTIVITY	(US\$)
PORTFOLIO DESIGN FOR STRATEGIC ACTIONS PRIORITIZED IN ENBCC	500,000
ENHANCEMENT OF CAPACITIES FOR SUSTAINABLE MANAGEMENT OF COMMUNAL FORESTS	1.200.000
DESIGN & PILOT IMPLEMENTATION OF INDIGENOUS MRV	400.000
ESTIMATION OF ACTIVITY DATA FOR DEGRADATION IN THE AMAZON & POLICIES DEVELOPMENT.	1.350.000
PROPOSAL OF A MULTILEVEL NESTING SCHEME	100.000
PROJECT MANAGEMENT	250.000
<b>TOTAL</b>	<b>3.800.000</b>

# ADDED VALUE OF THE UN-REDD NATIONAL PROGRAM



- IN THE 12<sup>TH</sup> MEETING OF THE UN-REDD POLICY BOARD (LIMA, 2014), PERU EXPRESSED ITS INTEREST TO APPLY TO A UN-REDD NATIONAL PROGRAM, RATIFIED THROUGH AN INFORMAL PRESENTATION IN 13<sup>TH</sup> MEETING AT ARUSHA, TANZANIA (NOV. 2014)
- THE SIGNIFICANT IMPROVEMENTS MADE BY PERU IN THE MAIN COMPONENTS OF REDD+, COMPLEMENTED WITH THIS NATIONAL PROGRAM, WILL ALLOW OUR COUNTRY TO COMPLETE PROCESSES IN KEY ISSUES.
- THE GAP ANALYSIS PRESENTED BEFORE HIGHLIGHTS THAT THERE ARE SOME ASPECTS THAT ARE NOT COVERED BY CURRENT TECHNICAL COOPERATION, THAT ARE CRITICAL TO MEET THE STANDARDS REQUESTED BY MAIN RESULTS BASED PAYMENTS PROGRAMS (NORWAY, FCPF-CF)
- THE FACT THAT THIS SUPPORT COMES FROM UN-REDD ENSURES THAT THE DESIGN OF THESE ACTIVITIES IS IN ACCORDANCE WITH THE GUIDELINES AGREED IN THE UNFCCC DISCUSSIONS.
- THE UN-REDD SUPPORT ALSO PROVIDES A FAST PROCESS THAT WILL ALLOW PERU TO ACCOMPLISH THOSE CRITICAL REQUIREMENTS.





PERÚ

Ministerio  
del Ambiente

Programa Nacional de Conservación de Bosques  
para la Mitigación del Cambio Climático

Av. Dos de Mayo N° 1545 Of. 502, San Isidro  
T.: 611 6000

**[www.bosques.gob.pe](http://www.bosques.gob.pe)**



[programabosques.peru](https://twitter.com/programabosques.peru)



[@ProgramaBosques](https://www.facebook.com/ProgramaBosques)

